



WELCOME



TO CHAPEL HILL - PHASE 3 & 4 LOCHTEFELD SUBDIVISION

Located on the East side of St. John's Rd.

Just North of St. Rt. 119

Walking Distance to Church, School, and Park

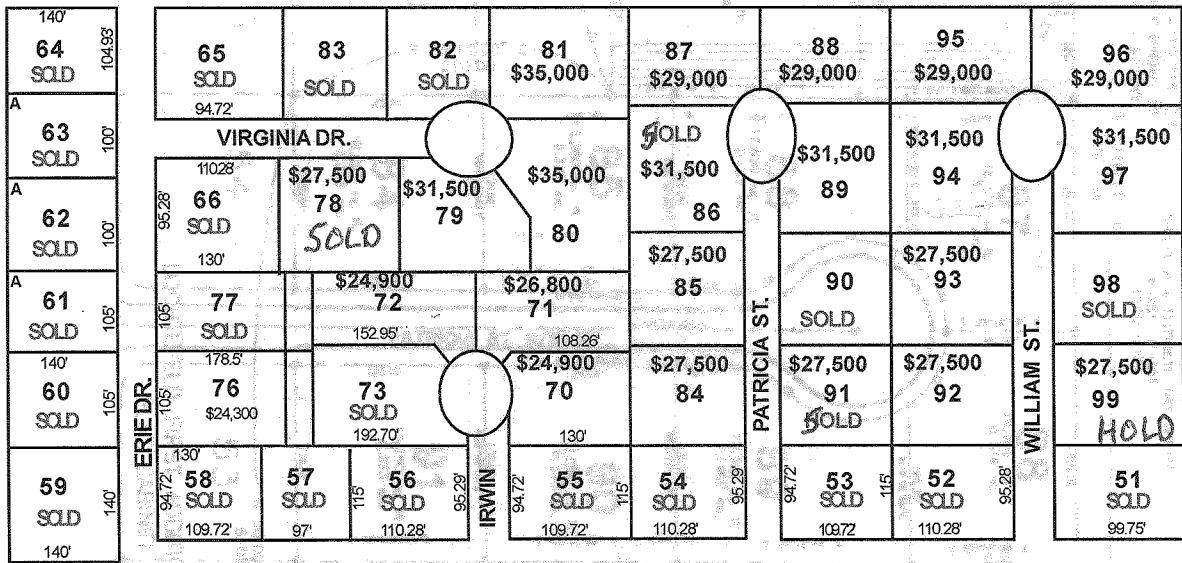
Marion Local School District

Night Lighting, Clean and Friendly Neighborhood

Sewage and Sanitation Provided

Sewage Inspection \$100.00 plus \$18.00/month thereafter

Legal Description: Situated in Section 24, Town 7 South, Range 3
East of Marion Township, County of Mercer, State of Ohio.



BUCKEYE

OWNERS: Dan and Grace Jutte



131 E. Main St.
St. Henry, Ohio 45883
Ph: (419) 678-4384
Fax: (419) 678-8648

For Additional Info., Please Call

WWW.RANDYEVERS.COM