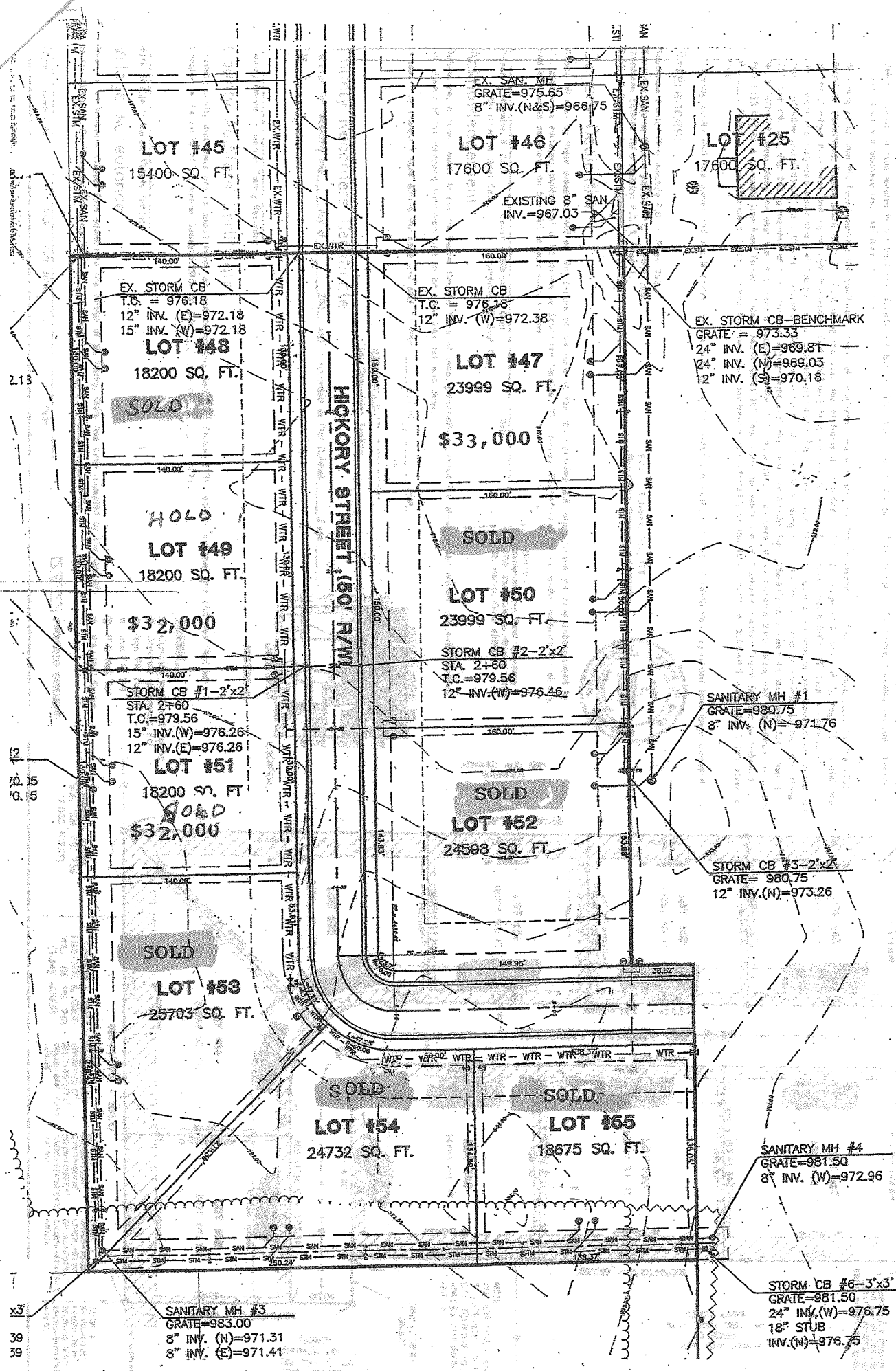


EXHIBIT A
SOLUTION FOR THE PROPOSED 150' R/W ADDITION



LOT #45
15400 SQ. FT.

LOT #46
17600 SQ. FT.

LOT #25
17600 SQ. FT.

EX. STORM CB
T.C. = 976.18
12" INV. (E)=972.18
15" INV. (W)=972.18
LOT #48
18200 SQ. FT.

EX. STORM CB
T.C. = 976.28
12" INV. (W)=972.38

EX. STORM CB-BENCHMARK
GRATE = 973.33
24" INV. (E)=969.81
24" INV. (N)=969.03
12" INV. (S)=970.18

LOT #47
23999 SQ. FT.
\$33,000

HOLD
LOT #49
18200 SQ. FT.
\$32,000

SOLD
LOT #50
23999 SQ. FT.

STORM CB #1-2'x2'
STA. 2+60
T.C.=979.56
15" INV.(W)=976.26
12" INV.(E)=976.26
LOT #51
18200 SQ. FT.
SOLD
\$32,000

STORM CB #2-2'x2'
STA. 2+60
T.C.=979.56
12" INV.(W)=976.46

SANITARY MH #1
GRATE=980.75
8" INV. (N)=971.76

SOLD
LOT #52
24598 SQ. FT.

STORM CB #3-2'x2'
GRATE=980.75
12" INV.(N)=973.26

SOLD
LOT #53
25703 SQ. FT.

SOLD
LOT #54
24732 SQ. FT.

SOLD
LOT #55
18675 SQ. FT.

SANITARY MH #4
GRATE=981.50
8" INV. (W)=972.96

SANITARY MH #3
GRATE=983.00
8" INV. (N)=971.31
8" INV. (E)=971.41

STORM CB #4-3'x3'
GRATE=981.50
24" INV.(W)=976.75
18" STUB
INV.(N)=976.75

2.13

70.15
70.15

39
39