



WELCOME TO

MARION LOCAL COUNTRY LOT

Mercer Shelby County Line Road
JUST SOUTH OF ST. RT. 119

Price: \$25,000

School District: Marion



For Additional Info., Please Call

131 E. Main St.
St. Henry, Ohio 45883
Ph: (419) 678-4384
Fax: (419) 678-8648

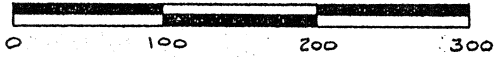
WWW.RANDYEVERS.COM

SURVEY OF (4) TRACTS IN THE
N.E. 1/4 - SEC. 25, T. 7 S., R. 3 E., MAR-
ION TWP., MERCER COUNTY, OHIO.

VOL 28 PAGE 732

MARCH 18, 1997

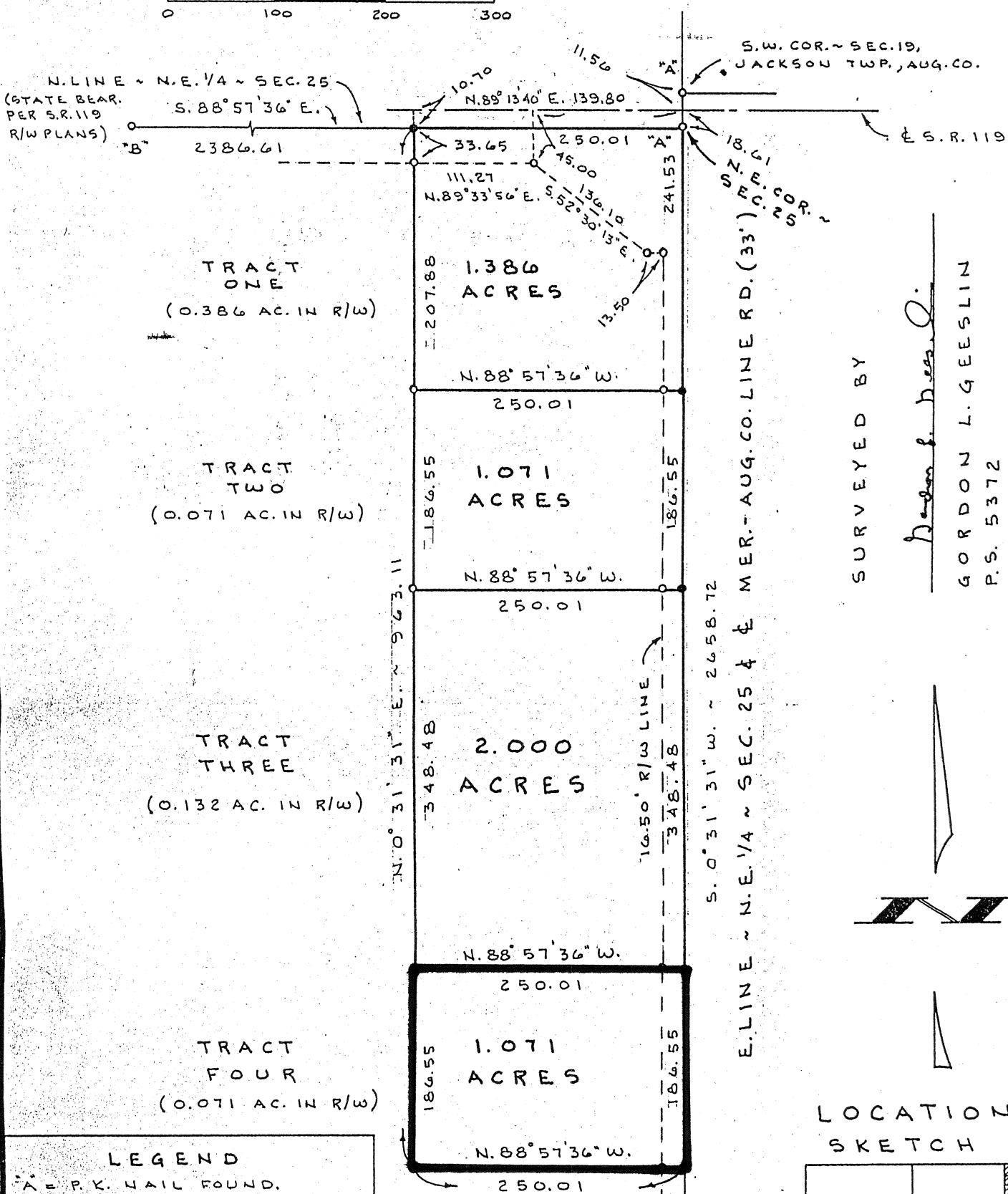
SCALE 1" = 100'



(STATE BEAR.
PER S.R. 119
R/W PLANS)

N. LINE ~ N.E. 1/4 ~ SEC. 25
S. 88° 57' 36" E.

S.W. COR. ~ SEC. 19,
JACKSON TWP., AUG. CO.



TRACT ONE
1.386 ACRES
(0.386 AC. IN R/W)

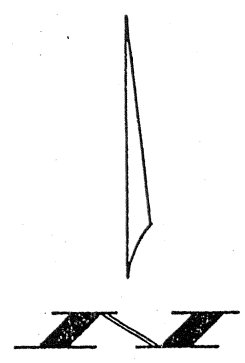
TRACT TWO
1.071 ACRES
(0.071 AC. IN R/W)

TRACT THREE
2.000 ACRES
(0.132 AC. IN R/W)

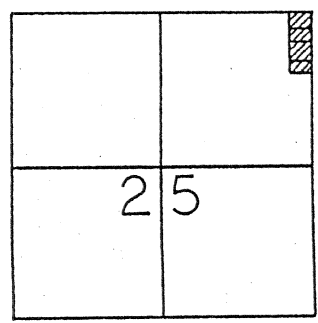
TRACT FOUR
1.071 ACRES
(0.071 AC. IN R/W)

SURVEYED BY

Gordon L. Geeslin
GORDON L. GEESLIN
P.S. 5372



LOCATION SKETCH



LEGEND

- "A" = P.K. NAIL FOUND.
- "B" = R.R. SPIKE FOUND OVER COR. STONE @ N. 1/4 POINT.
- "C" = BAR FOUND OVER COR. STONE @ E. 1/4 POINT.
- = P.K. NAIL SET.
- = 5/8" x 30" IRON BAR SET.

PAID

MAR 21 1997

MERCER COUNTY COMMISSIONERS
CELINA, OHIO

Jan Bollegger 80.00

GORDON L. GEESLIN

LAND SURVEYOR
810 EAST MARKET STREET
CELINA, OHIO
PHONE (419) 586-6155



PERMANENT
PARCEL No. _____

Part of: _____ Sec. _____ T. _____ R. _____ Township

Grantor: _____ Area Retained: _____ Acres

Grantee: _____ Area Transferred: _____ Acres

Deed References: _____

APPROVALS: *Chas P. Wilhoit*

AGENCY: Board of Health

DATE: 21 MARCH 97

County Sanitary Engineer

John T. Collins

County Engineer

3-21-97